

# MOUNT ROSE AND WASHOE VALLEY SCENIC BYWAY CORRIDOR MANAGEMENT PLANS

PARK COMMISSION  
JANUARY 5, 2016



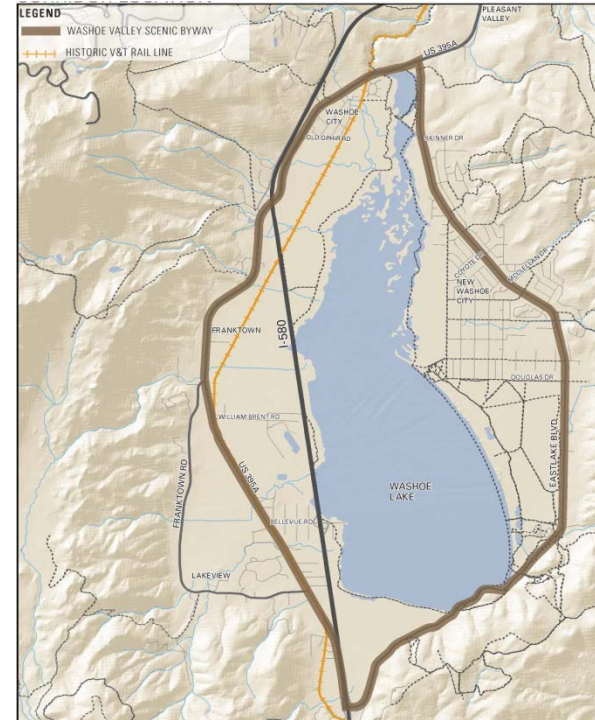
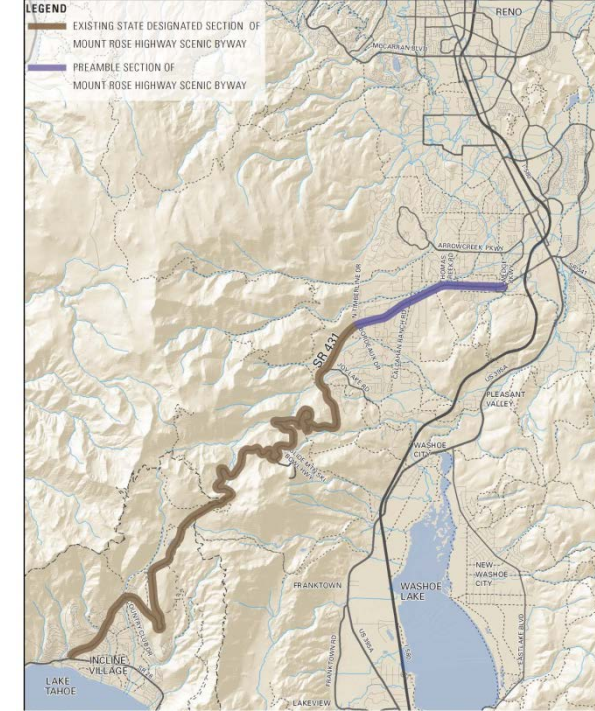
PREPARED BY

**DESIGNWORKSHOP**

# CORRIDOR MANAGEMENT PLAN

## PURPOSE:

- Identifies the corridor's most valuable intrinsic qualities
- Establishes goals to manage and preserve valued qualities
- Address issues related to safety, access, visitor experience, aesthetics and environmental gain
- Identifies opportunities for wayfinding and signage
- Creates marketing and promotion strategies
- Identifies implementation and management strategies to achieve the goals and vision

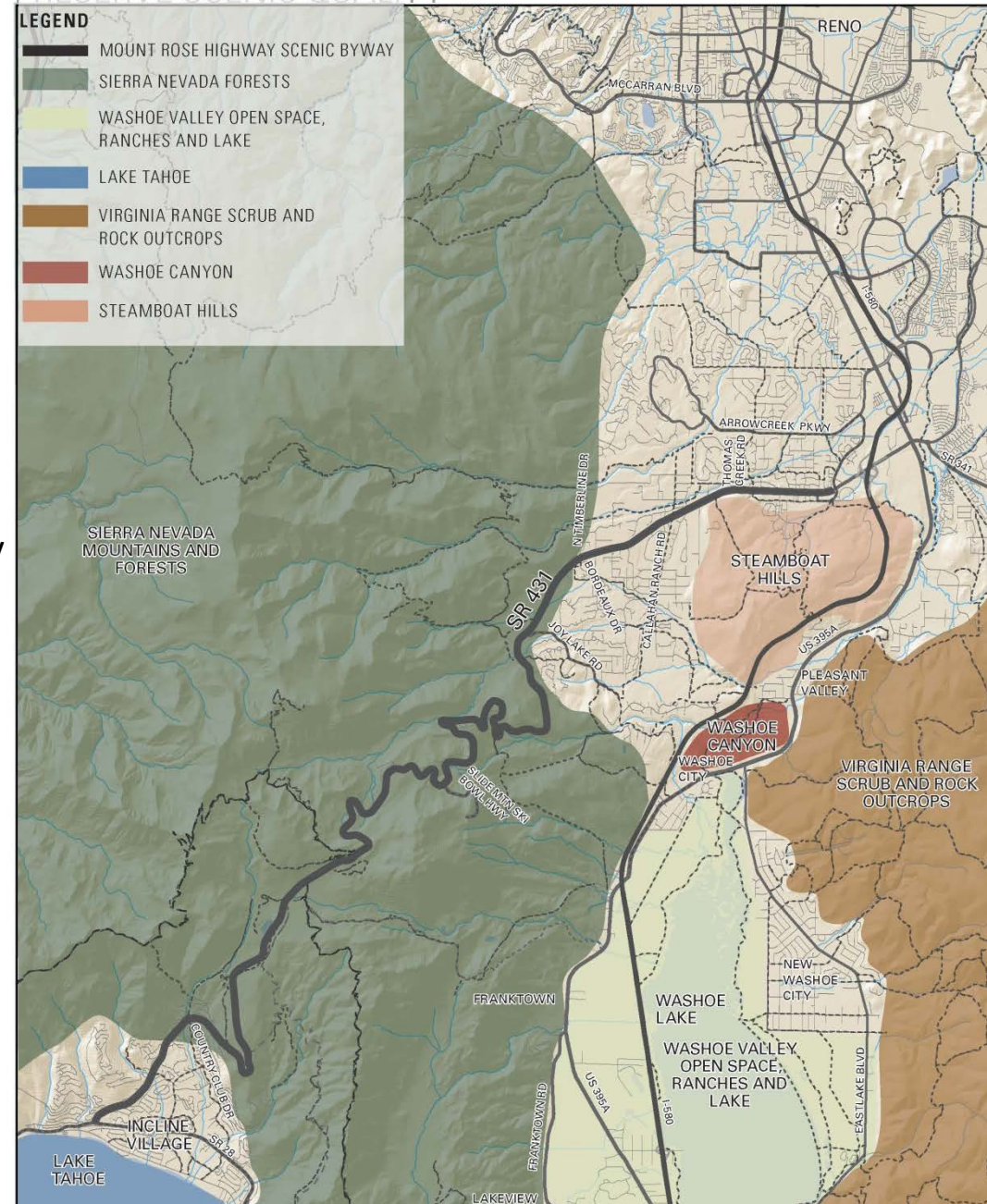


# MOUNT ROSE BYWAY RECOMMENDATIONS

## PRESERVE THE SCENIC QUALITY AND NATURAL RESOURCES

- View preservation
  - Preserve mountain views
  - Maintain outdoor advertising standards to prohibit billboards
  - Manage new cell towers + wind turbines to not detract visual quality
- Landscape treatments
- Natural resources
  - Forest health & weed removal
- Wildlife
  - Identify, maintain and enhance wildlife crossings
  - Provide passages in barrier rails for small animals

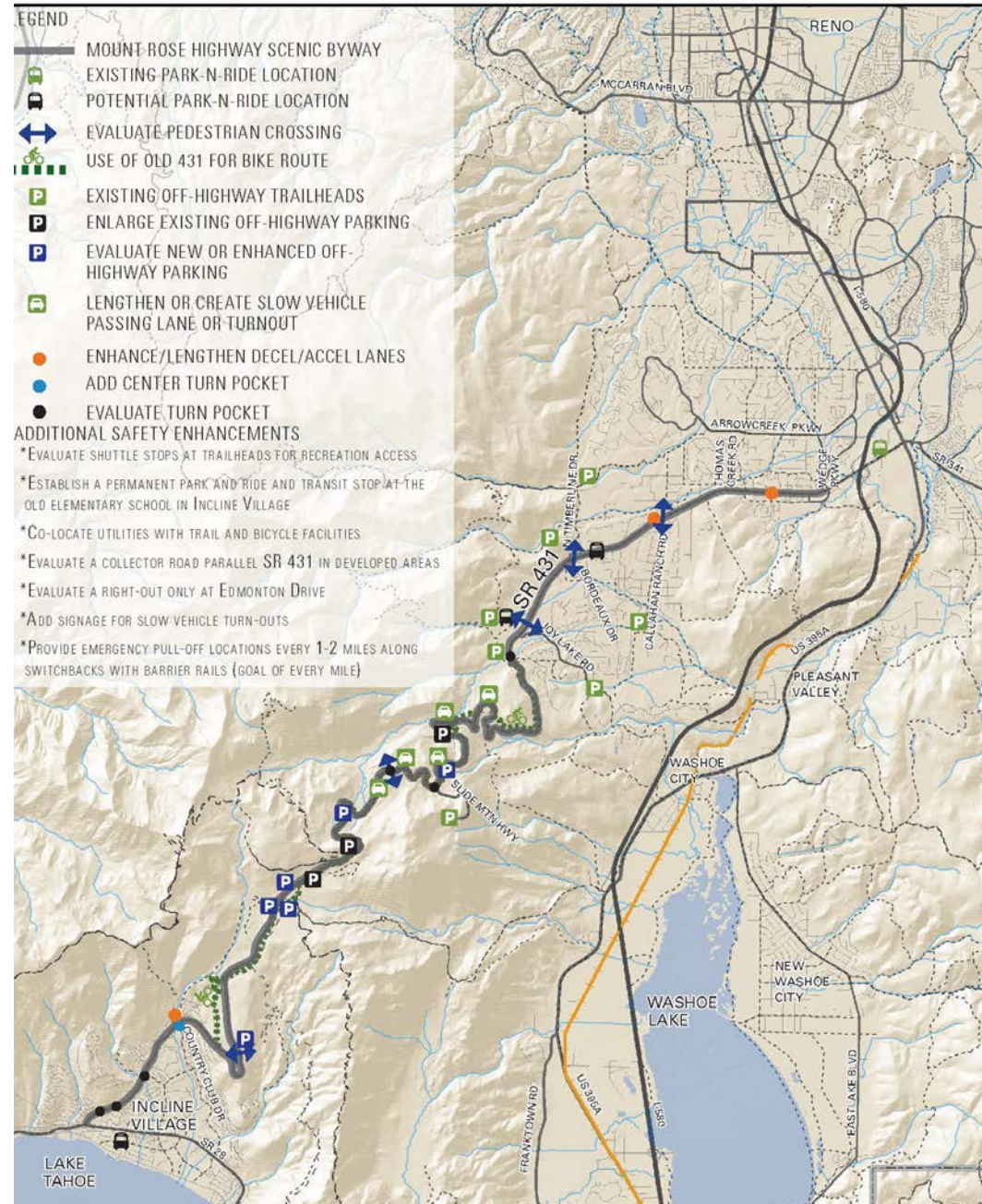
## PRESERVE SCENIC QUALITY



## MOUNT ROSE BYWAY RECOMMENDATIONS

BALANCE RECREATION ACCESS WITH  
TRANSPORTATION AND SAFETY NEEDS

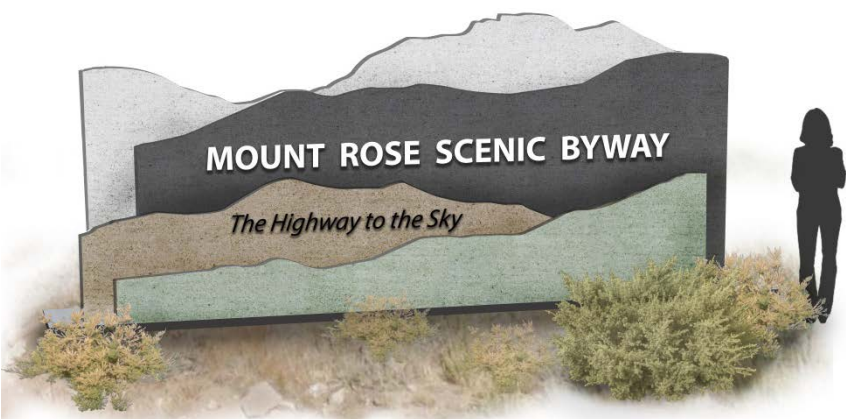
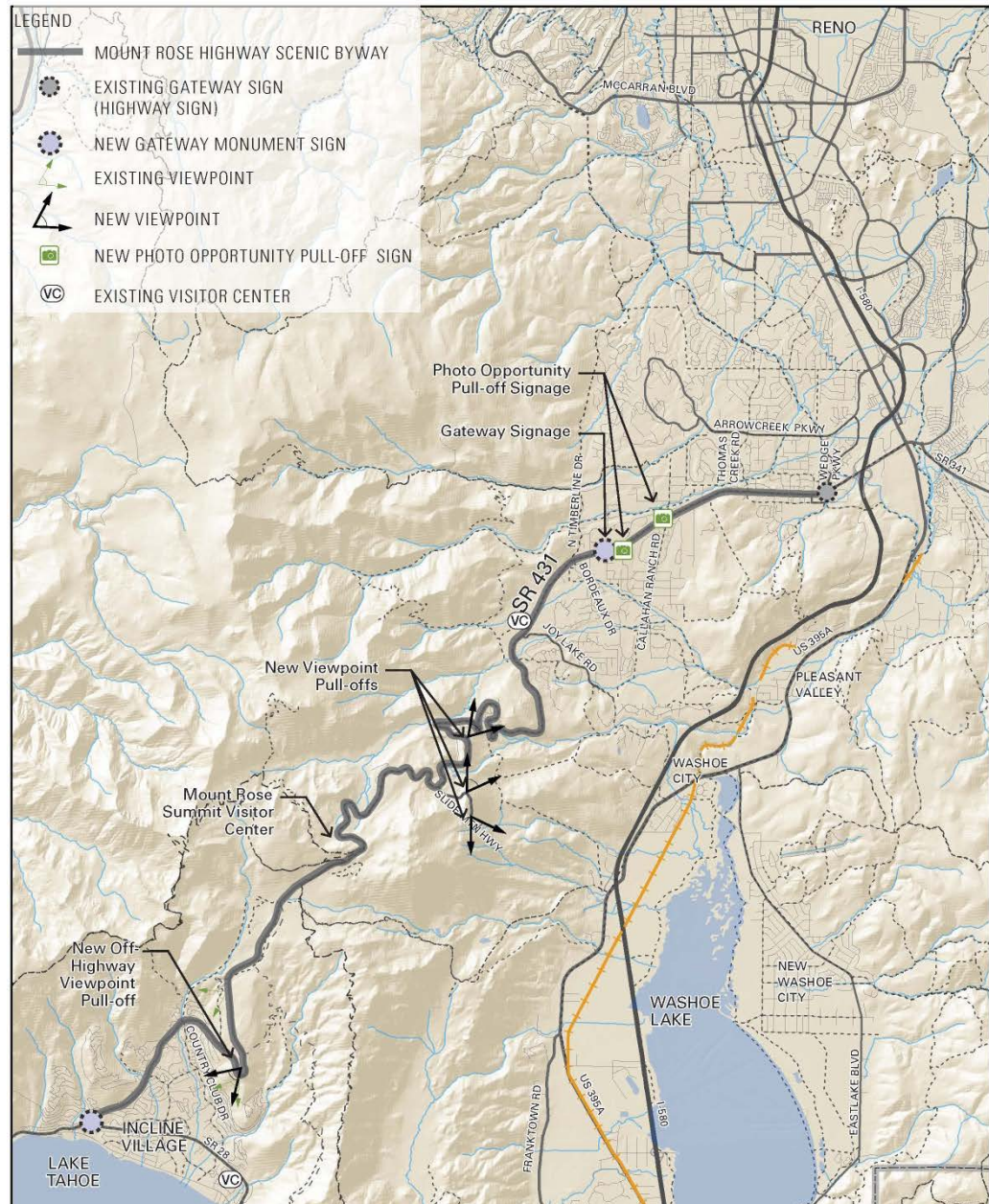
- Recreation Access
  - Off-highway parking
  - Trail enhancements
- Transportation + Mobility
  - Old Hwy 431 as bike path and emergency access
  - Pedestrian crossings
  - Bike lanes
  - Park-n-ride locations
  - Slow vehicle turn-outs
  - Decel/accel lanes
  - Center turn pockets
  - Emergency turnouts



# MOUNT ROSE BYWAY RECOMMENDATIONS

## CONNECT PEOPLE WITH THE CORRIDOR

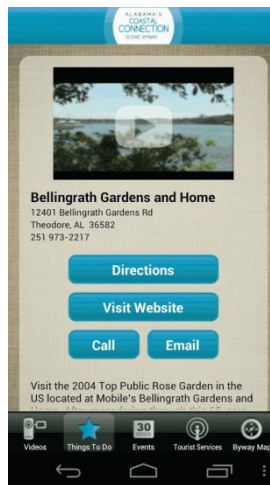
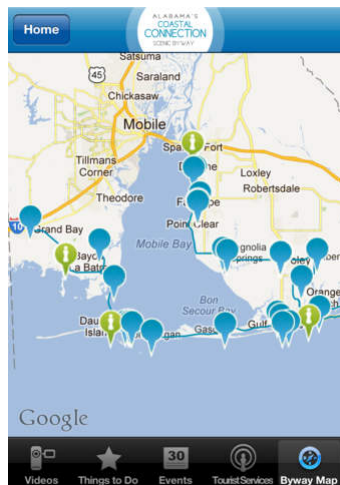
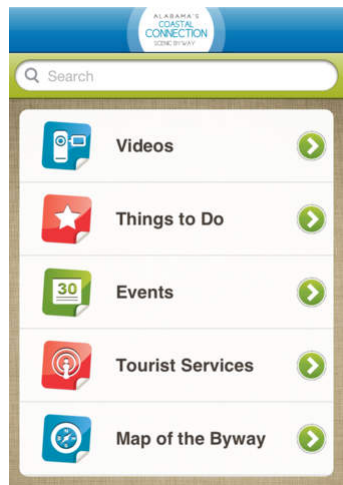
- Overlooks/Vista Points
  - Off-highway viewpoint of Lake Tahoe
  - Photo-op pullouts at Thompson Lane and Mountain Ranch Road
- Signage
  - Corridor monument signage
  - Digital signage for transit/rec parking
- Visitor Center
  - Utilize and promote Galena Creek Visitor Center as a gateway to the Byway



# MOUNT ROSE BYWAY RECOMMENDATIONS

## PROMOTE TOURISM

- Utilize Technology to Provide Information
  - Off-highway viewpoint of Lake Tahoe
- Market the Corridor and Its Relationship to the Reno/Tahoe Byways



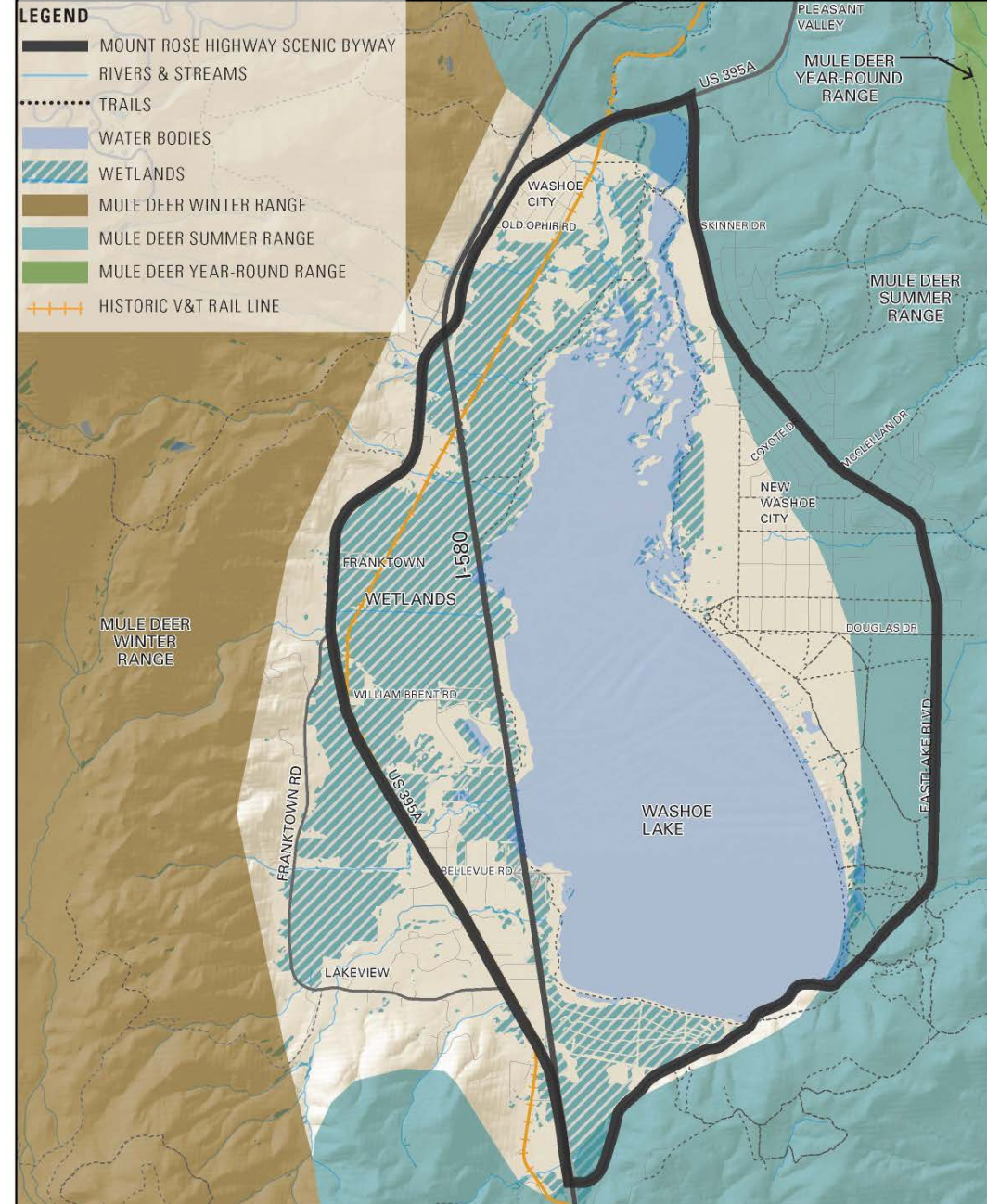
WASHOE COUNTY

# WASHOE VALLEY BYWAY RECOMMENDATIONS

## PRESERVE + ENHANCE THE NATURAL ENVIRONMENT

- Wildlife
  - Actively manage wildlife and their migration routes
  - Identify and enhance crossings (overpasses or underpasses)
- Natural Resources
  - Manage and maintain forest health
  - Utilize livestock for fuels reduction, pasture management and noxious weed management
  - Maintain and enhance fire breaks
  - Promote and support noxious weed removal, defensible space and fire safety

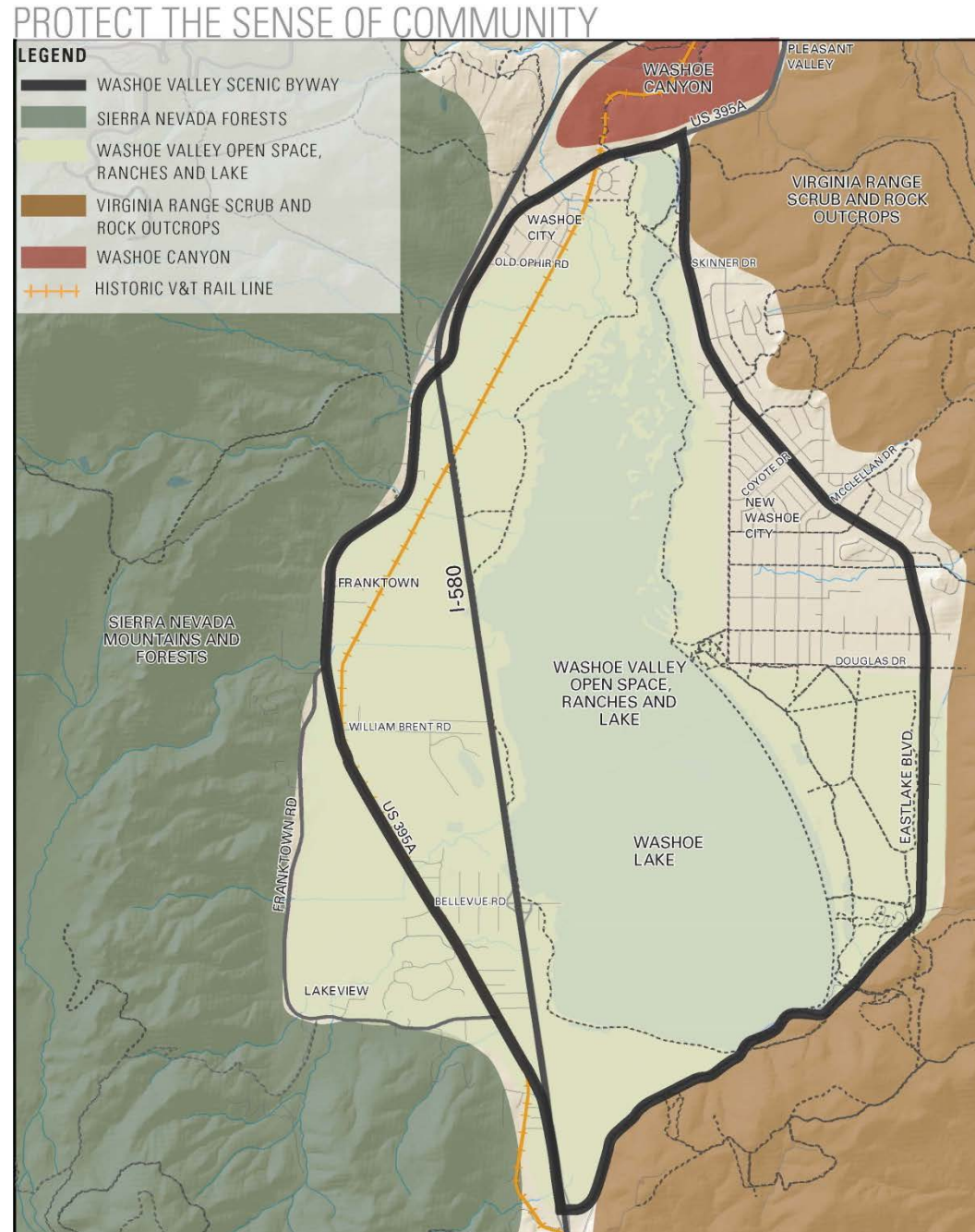
## PRESERVE+ ENHANCE THE NATURAL ENVIRONMENT



# WASHOE VALLEY BYWAY RECOMMENDATIONS

## PROTECT THE SENSE OF COMMUNITY

- Preserve Views + Scenic Vistas
  - Manage development
  - Manage new cell towers + wind turbines to not detract visual quality
- Preserve Open Space
  - Consider acquisition and preservation of open space
  - Consider acquisition of Winters Ranch House – Visitor Center
  - Preserve Washoe/Allen’s Canyon & V&T Corridor
- Aesthetics
  - Native and low water use landscape materials
  - Snow fencing

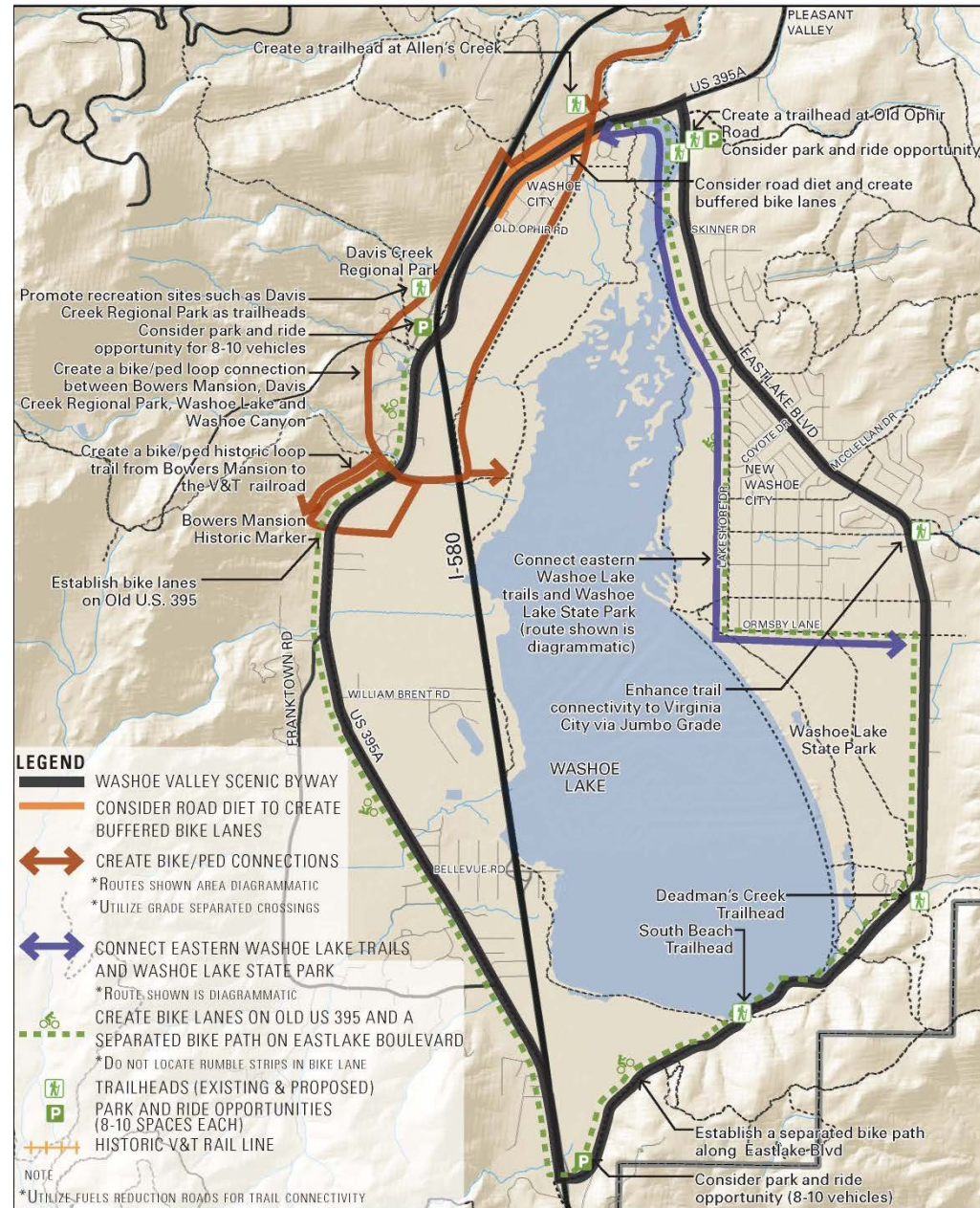




# WASHOE VALLEY BYWAY RECOMMENDATIONS

## ENHANCE ACTIVE TRANSPORTATION FACILITIES

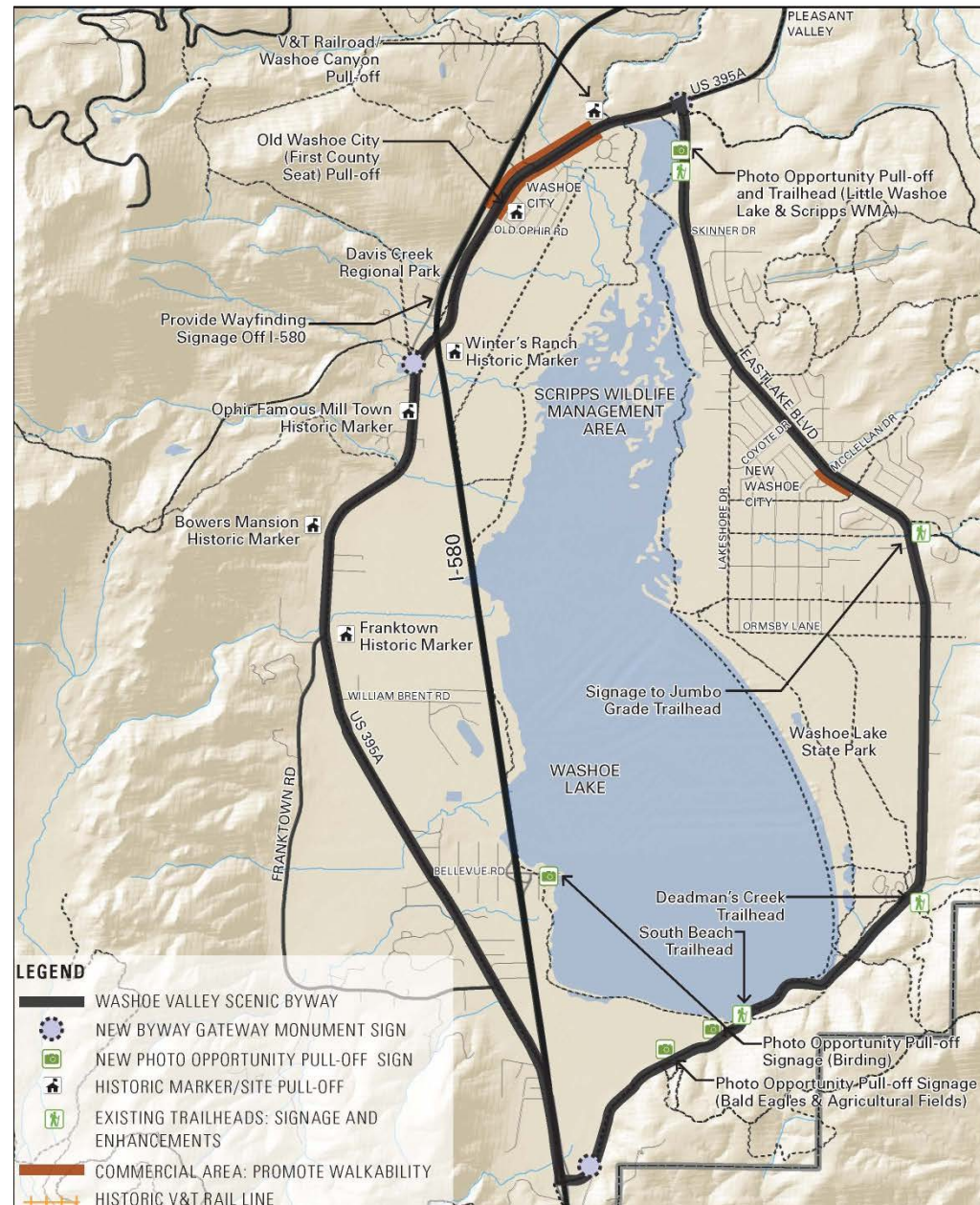
- Enhance Bike and Pedestrian Facilities
  - Bike lanes along old U.S. 395
  - Bike lanes or separated path on Eastlake
  - Road diet with buffered bike lanes/separate paths through Old Washoe City (in consideration of the use of the road as an alternate to I-580 in certain conditions)
  - Ped/bike connection between Bower's Mansion, Davis Creek Park and Washoe Lake, etc.
  - Connect eastern Washoe Lake Trails and Washoe Lake State Park
  - Create trail and trailhead through Washoe/Allen's Canyon



# WASHOE VALLEY BYWAY RECOMMENDATIONS

## PROMOTE THE ECONOMIC VITALITY – USER EXPERIENCE

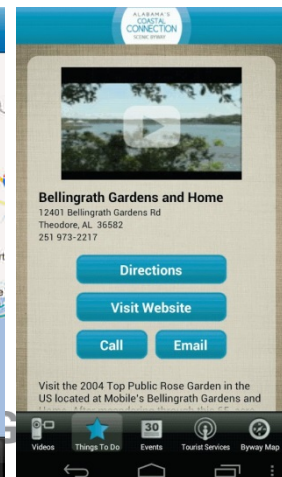
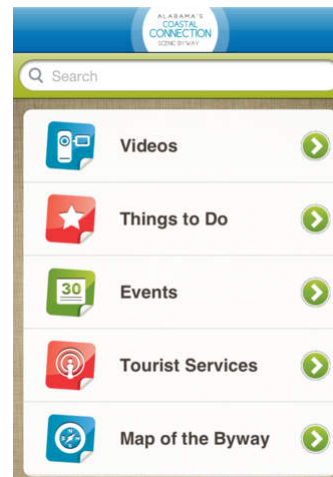
- Develop Pull-offs and Vista Points
  - Wildlife viewing
  - Historic markers and sites
- Enhance Recreation Resources
- Enhance Corridor Signage
  - Corridor monument signage
  - Signage from I-580
- Encourage revitalization and reinvestment into commercial sites that foster walkability and family-friendly, healthy lifestyles



# WASHOE VALLEY BYWAY RECOMMENDATIONS

## PROMOTE ECONOMIC VITALITY – GEOTOURISM

- Utilize Technology to Provide Information
- Communicate the Value of Washoe Valley as a Regional Resource
- Communicate the Valley's rich history and resources
- Communicate the Corridor's Relationship to the Reno/Tahoe Byways



WASHOE COUNTY

WHERE CAN YOU FIND A COPY OF BOTH PLANS?

[https://www.washoecounty.us/parks/planning\\_and\\_development/corridor\\_management\\_plans.php](https://www.washoecounty.us/parks/planning_and_development/corridor_management_plans.php)

CONTACT:  
Cheryl Surface,  
csurface@washoecounty.us

THANK YOU!



WASHOE COUNTY

DESIGNWORKSHOP